

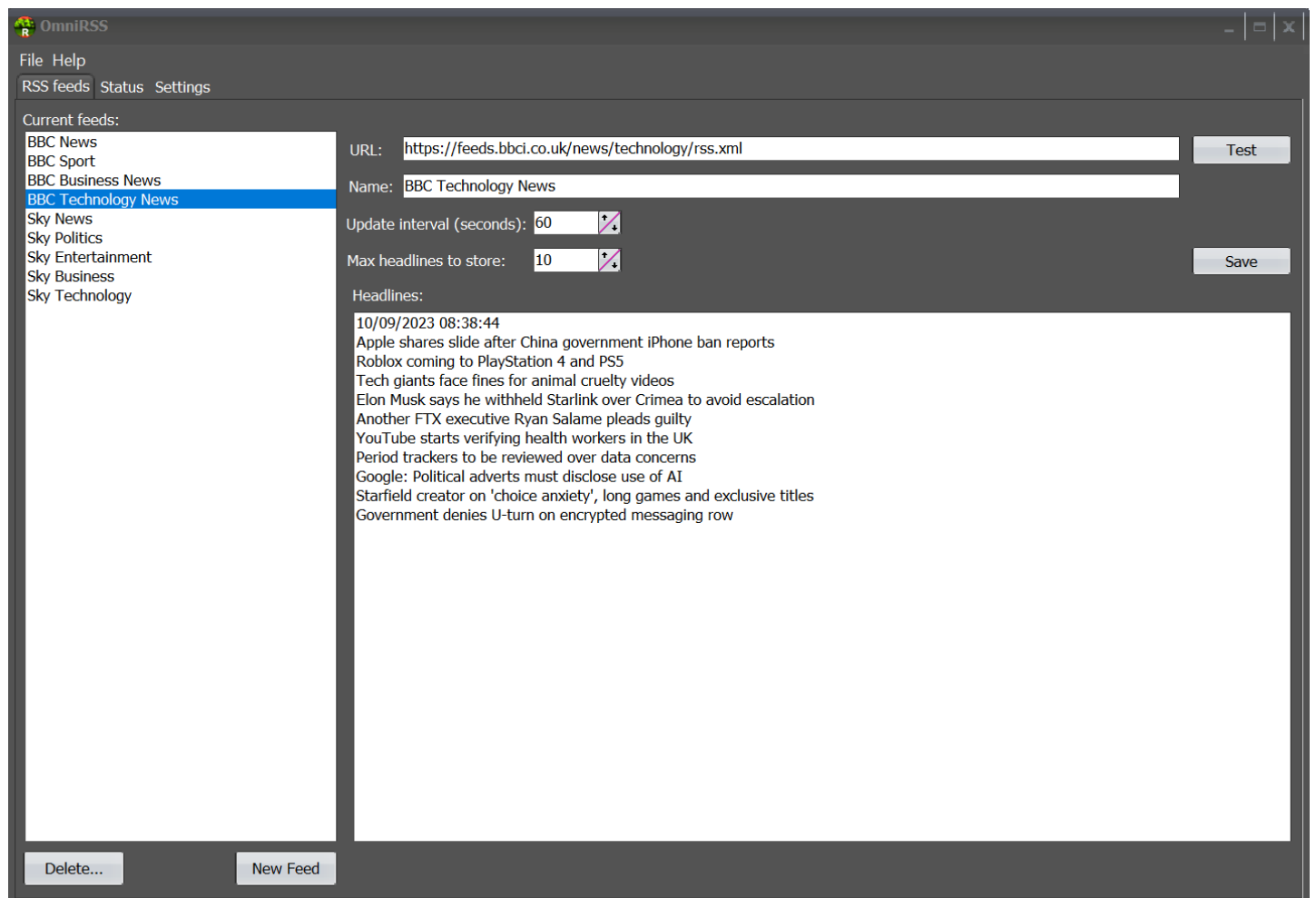


# OmniRSS

## User Reference Guide

September 2023 v11

RSS Data Feed Manager



## Introduction

OmniRSS is an RSS feed manager that retrieves data from any available RSS feeds. OmniRSS is provided with OmniTicker and OmniDisplay providing publication of selected real-time data to tickers and video displays.

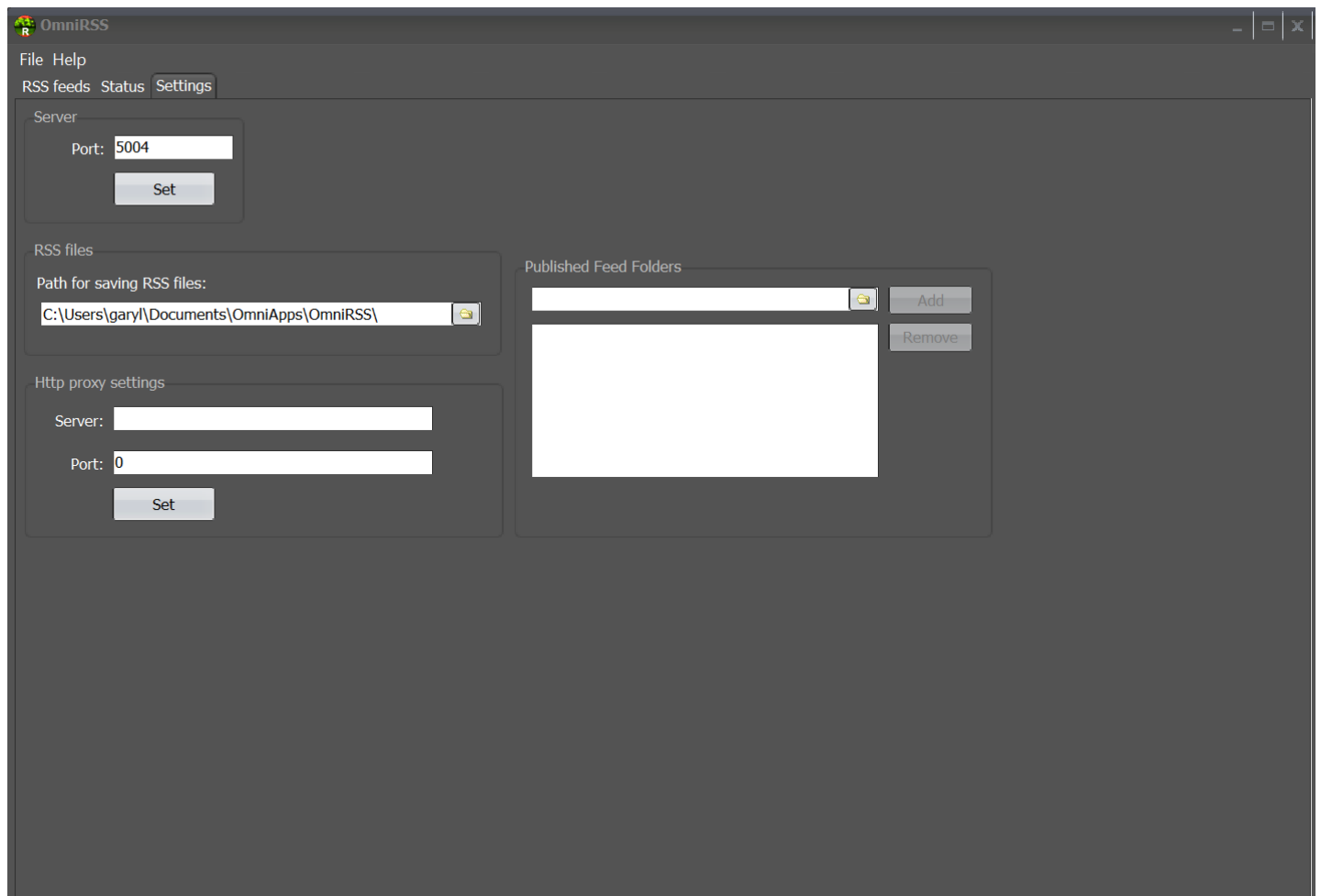
## System Requirements and Installation

OmniRSS can be installed on any Windows 10 /11 desktop; it requires an internet connection. It is automatically installed with OmniTicker or OmniDisplay and automatically started when running OmniDisplay or OmniTicker. In standalone mode OmniRSS can be run from the start menu.

## Settings - Auto-Network Setup

Under Settings, OmniRSS defaults port of 5004; if required it can be changed by a user by entering the preferred port. OmniRSS user files (.txt) are saved to a default path:

Documents\OmniApps\OmniRSS. Alternatively, they can be saved to a user defined feed folders.



A user has the option for proxy settings (in some cases to reside outside a firewall) and these can be set also in the Settings panel.

## Application Status

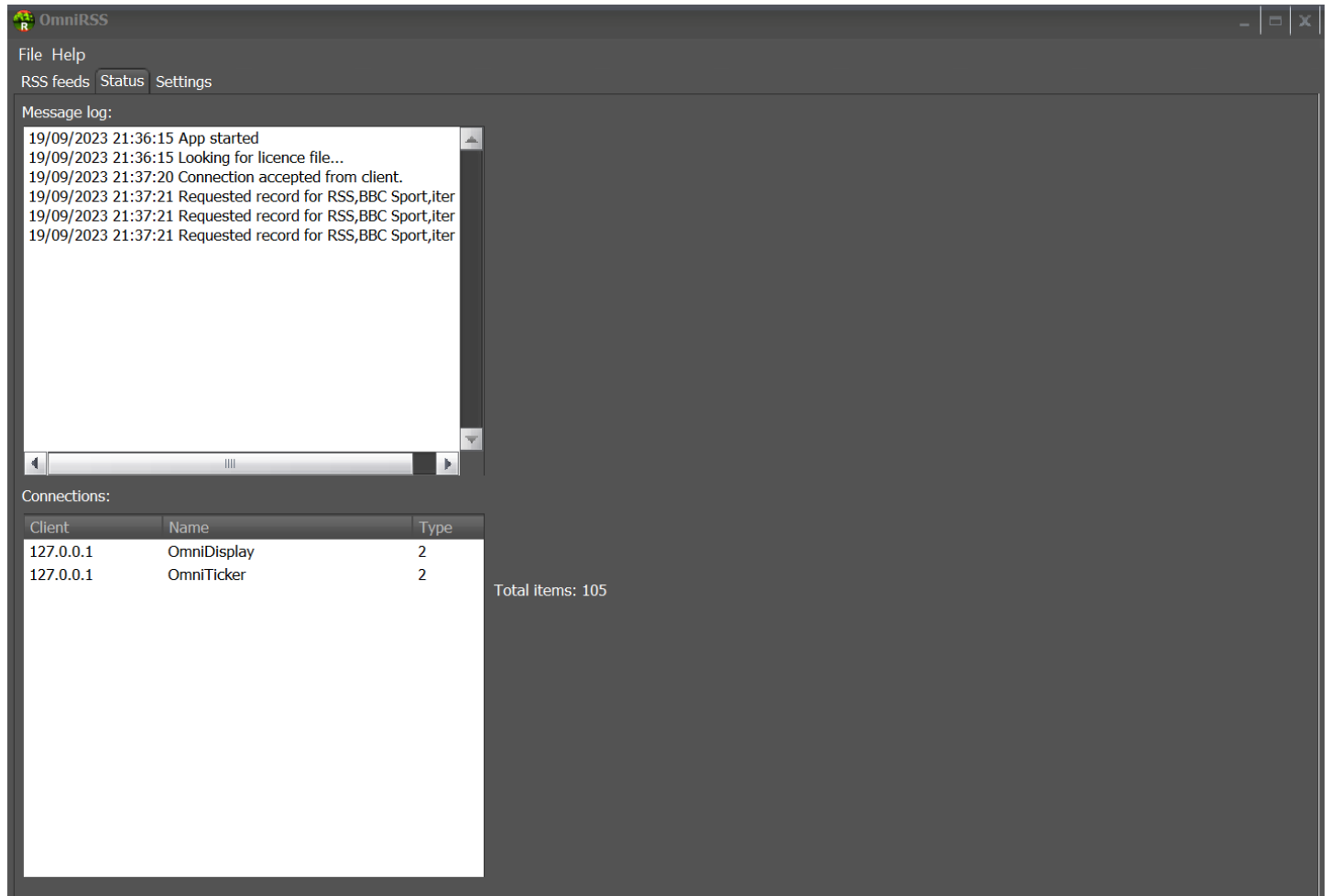
This is viewed from the 'Status' tab and will identify those applications that are attached to OmniRSS. In they event or any connection errors, they will appear in this log along with the other messages.

When OmniTicker and OmniDisplay start, this tab will show the live connections.

## Setting up an RSS Feed

Select New Feed and enter to chosen URL, or copy and paste from source.

When available to OmniRSS, Test will show headlines. Select the update interval and maximum lines to be stored and Save.



## Administrator Notes

OmniRSS places a preloaded 'OmniRSS.ini' in program files with a copy in:

Documents/OmniApps/OmniRSS