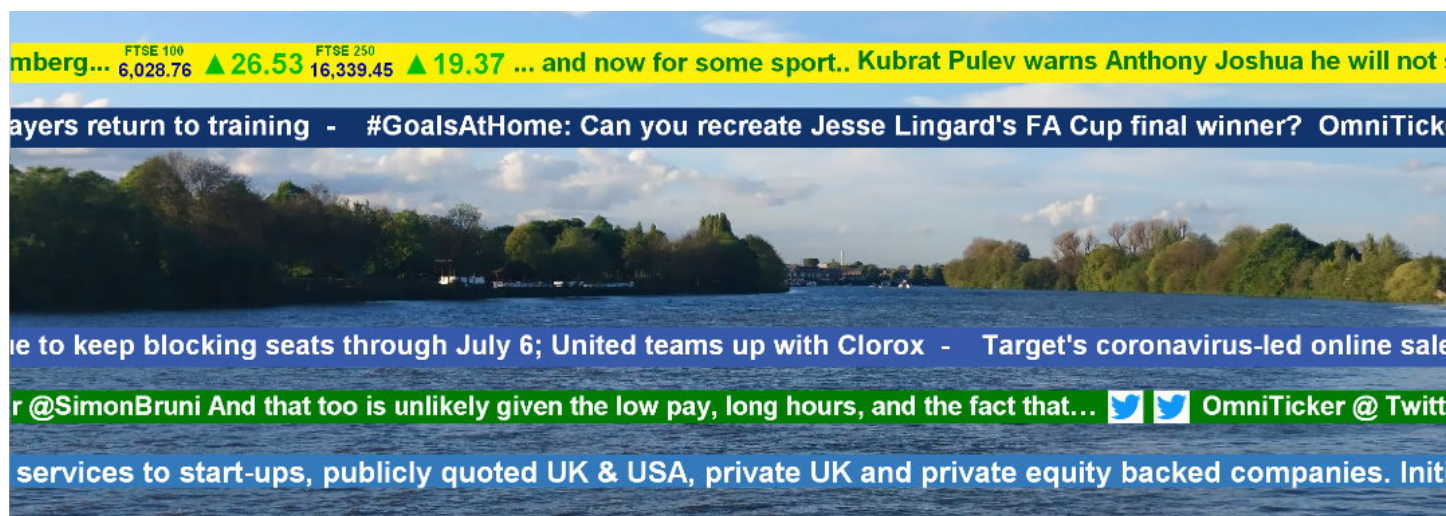




# OmniTicker

## User Reference Guide

September 2023 v11



OmniTicker Ticker Properties .....	2
Items to Display .....	3
Managing Parts .....	5
Standard Formatting .....	5
Managing Content.....	6
OmniTicker Tools & Reports .....	7
Connection Settings.....	7
OmniTicker and Excel .....	7
Publishing a Ticker .....	8
Schedules & Playlists .....	9

**Link to: OmniRSS User Guide**

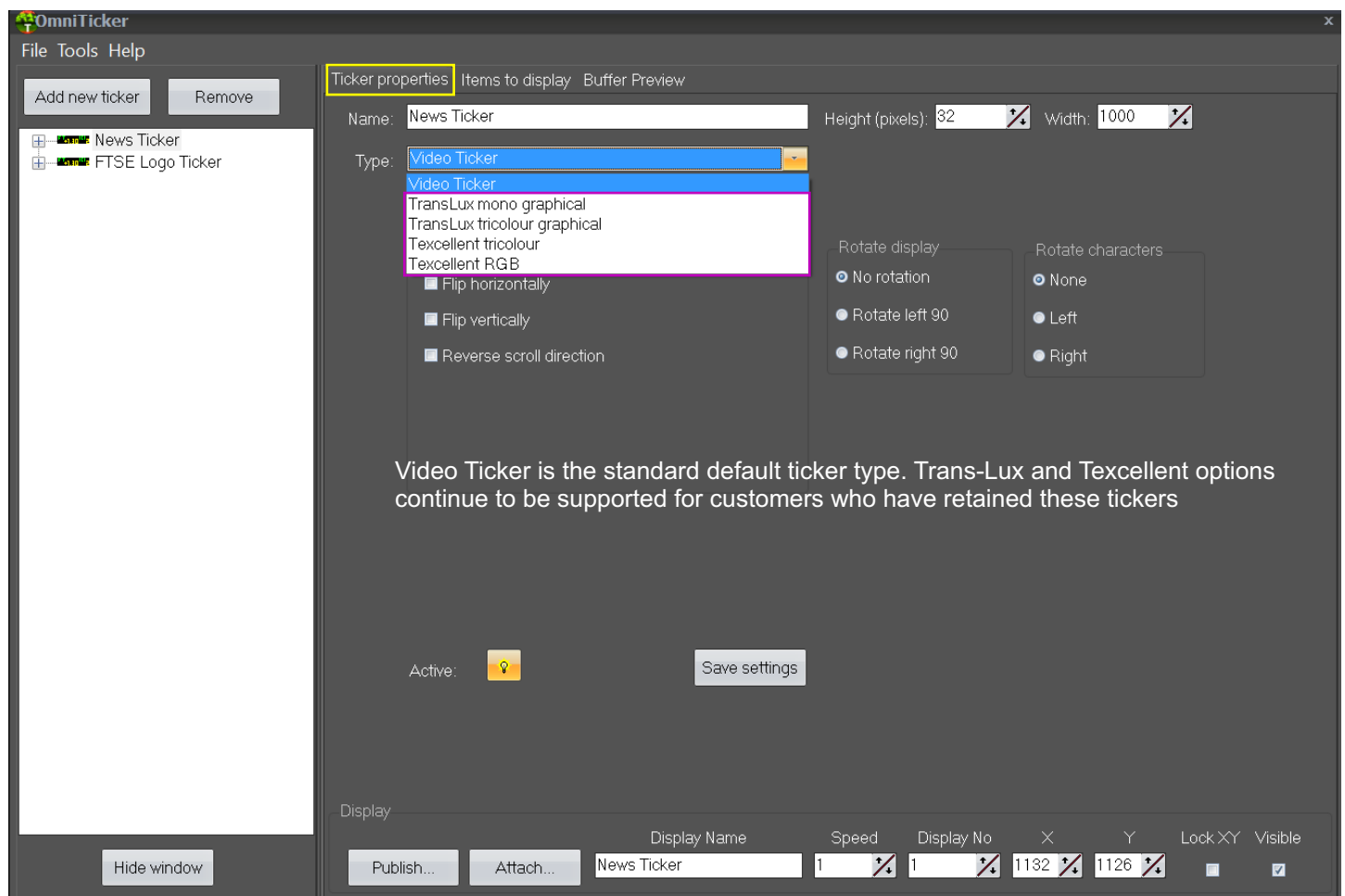


## OmniTicker Ticker Properties

OmniTicker has been used by leading financial institutions to support the iconic financial LED tickers. The name 'ticker' derives from the ticker symbol; its historical relevance the capability to display real-time information in a scrolling format using the ticker symbol as the identifier for a stock or index.

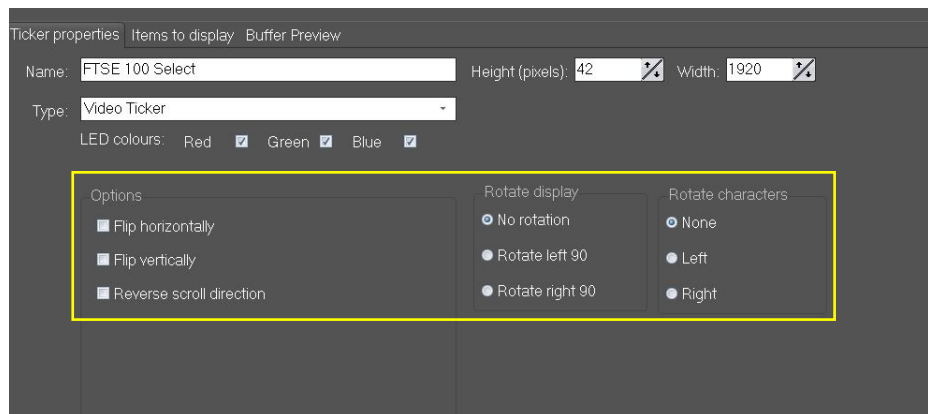
Scrolling message boards are everywhere today and the OmniTicker software has evolved to meet the differing requirements for the display of real-time information. Its overriding design principle: easy to setup, use and change with support for multiple types of information in a user's chosen sequence.

Within OmniTicker, there are two design tabs, **Ticker Properties**; this defines the characteristics of the ticker, type, size and scroll direction and **Items to Display** where a user defines data types, formats and content to be displayed. A third tab provides a view of what is in the buffer for each active virtual ticker.



Within **Ticker Properties**, the standard ticker type is a **Video Ticker**. For a new user this type should be selected and it defaults to full colour with the **LED Colours** (checked).

From here, a user defines the height and width of a **Virtual Ticker** which can be later published to a physical target ticker or display. A user should ensure the height and width of the of the virtual ticker is set in accordance with size and position required on the target physical display.



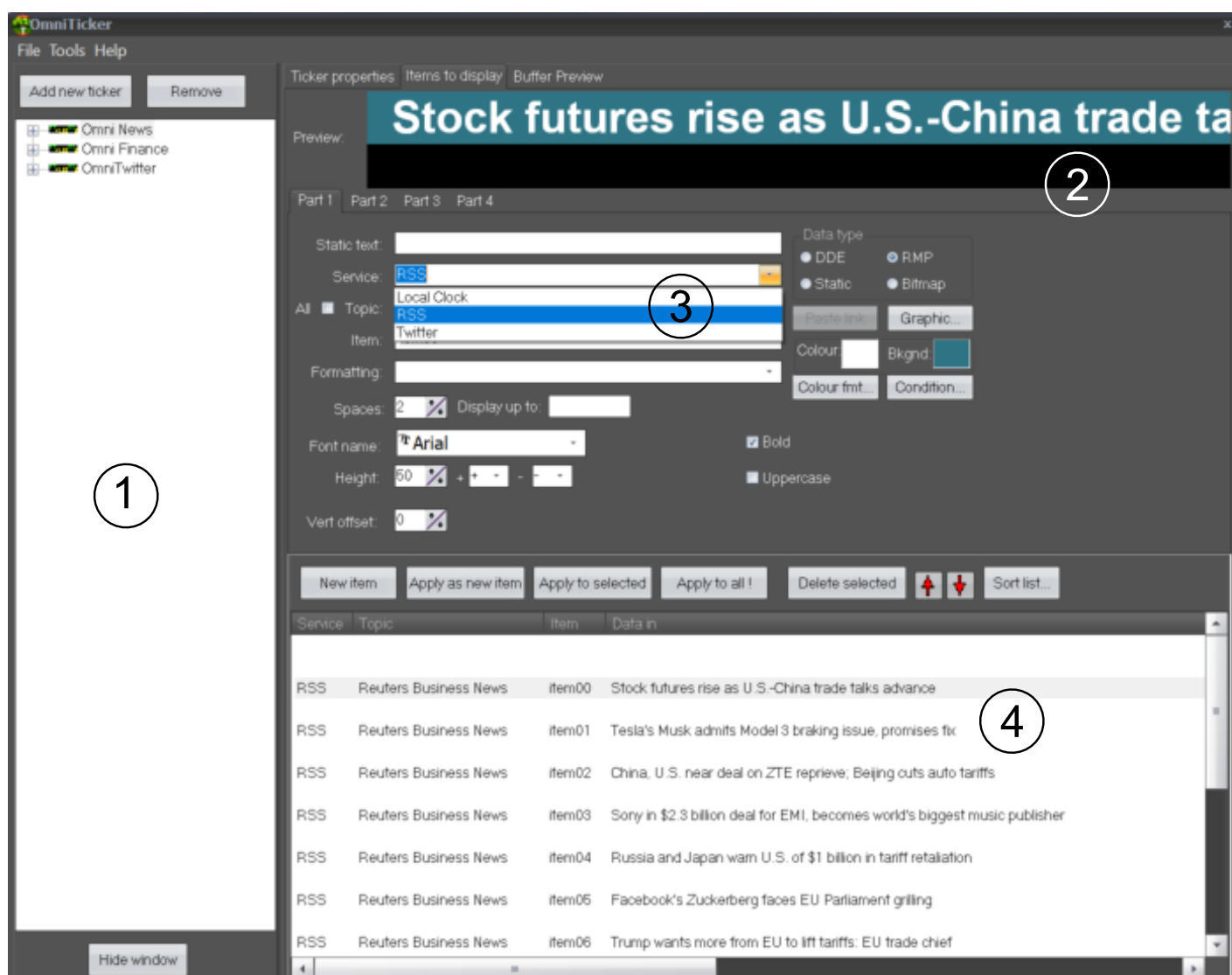
**Options:** the default is horizontal scrolling where the ticker moves from right to left.

Where, for example, a language is naturally read from right to left, (e.g. Arabic), the ticker would scroll left to right, using the reverse scroll direction option.

For vertically scrolling tickers, bottom to top and top to bottom. Rotate 90 (left and right) provides this function. A secondary option allows characters to be rotated left or right to make reading information easier.

## Items to Display

Items to display is where the ticker content is constructed. It has four panels; the first shows the tickers available with the option to add or remove them. The second panel is a preview window that shows the selected data item highlighted in panel 4, and the third panel provides the source data and edit functions.



## Data Types and Services

Four data item types can be displayed:

<b>Static</b>	Text,
<b>DDE</b>	Excel items
<b>RMP</b>	External data items
<b>Bitmap</b>	JPEG/PNG image items

DDE and RMP items have additional settings of **Service**, **Topic** and **Item**.

**Service** includes: Local Clock, RSS (OmniRSS data feeds), Twitter (when enabled in OmniRSS).

**Topic:** lists the group of data items associated with the chosen **Service** and **Item** lists every data item available within the Topic.

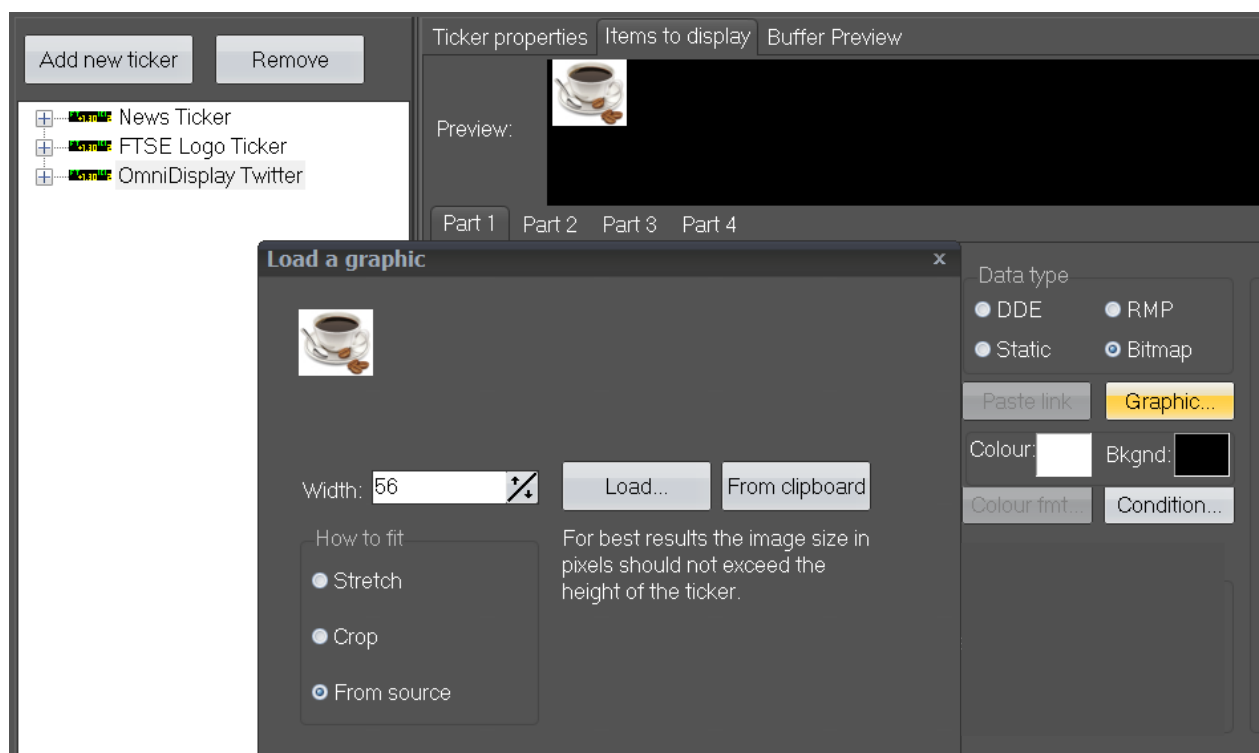
**Item:** each Item can have up to 4 **Parts**, each part having its own data type. Static text can be entered as a precursor to any Part (data item). Topic is the location/name of the attaching spreadsheet and Item, the cell location.

**Static Data** types only allow for text input only. A simple bulk load facility is also available from the File tab menu using text file input. Each line in a bulk upload text file becomes a data item in the ticker and can be amended as required.

**Excel Data** types require the spreadsheet to be open on the host desktop. Copy and **Paste Link** is the standard way to add a cell from Excel; this will populate the Service, Topic and Item in the dialogue box. Alternatively, these values can be entered manually.

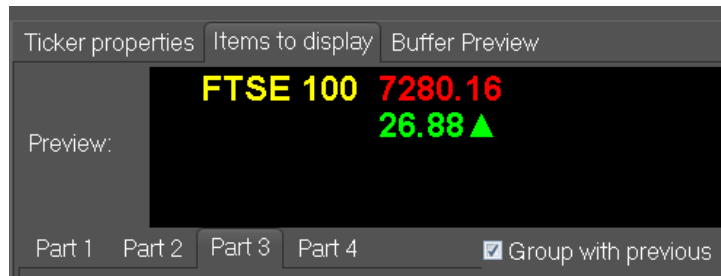
**RMP Data** types can access four Services, Local Clock, RSS (OmniRSS data feeds) and Twitter. Each data item is selected from the dropdown menu, Service, Topic and Item.

**Bitmap/ JPEG/ PNG** images are loaded from the Graphics button and should be the same size in pixels as the height as the ticker.



## Managing Parts

Each Part has one data item, the purpose of Parts 2, 3, and 4 is to provide the capability to group related data items together, although there are logical constraints on what data is grouped.



In the example here, Part 1 is static text 'FTSE 100', Part 2 is the Last Trade price and Part 3 is the Change from the previous value.

Last Trade price. Part 2 and Part 3 have been grouped together and formatted such that Part 3 will appear under Part 2.

The colour of each data item and its background are user-defined from the colour palette.

## Standard Formatting

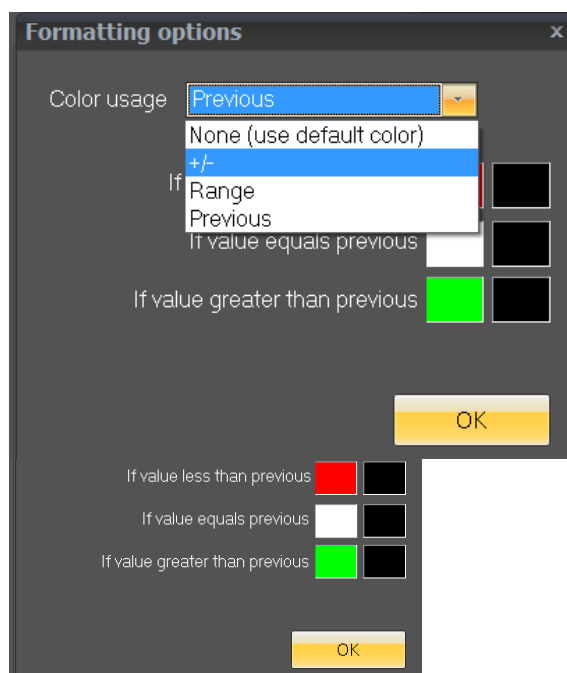


Each item part can be individually formatted; spaces before the item part, display up to, font and size vertical offset and for numerical values, positive, negative, up and down arrows.

Each item part can be set individually to 'Bold' or to appear in 'Uppercase'; these attributes apply to numeric or text based item parts.

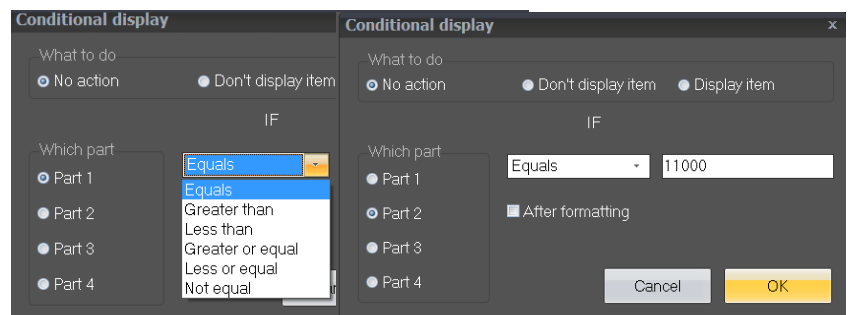
'Display up to' is used to discard superfluous characters at the end of a field. For example, if retrieving a field from Reuters using DDE, the stock symbol ANL.L, but could be displayed as ANL by placing a dot in the 'Display up to' dialogue box. The same can be used to remove surplus 'http' links in Twitter which cannot be displayed.

## Conditional Formatting

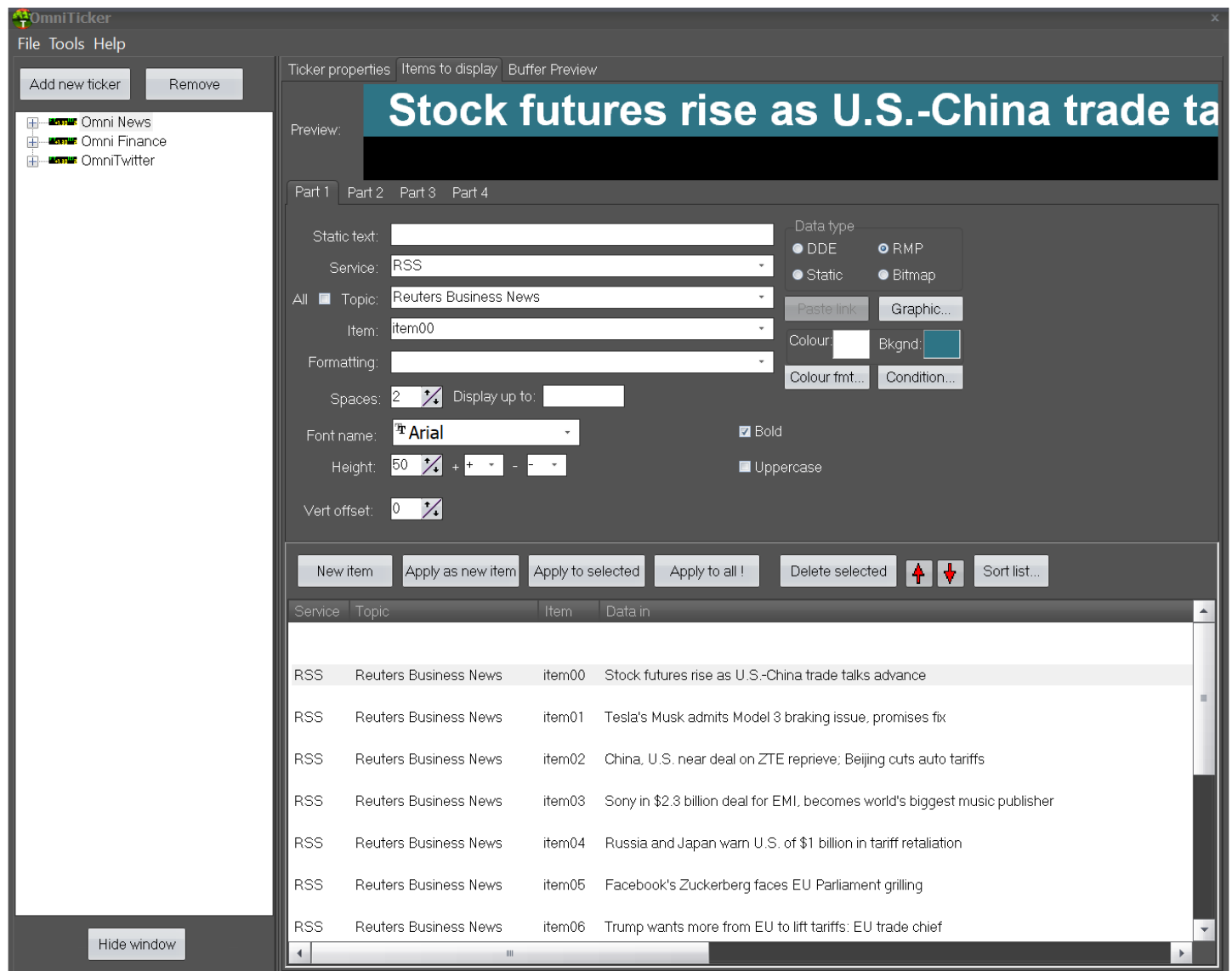


**Conditional colour formatting** can be based on whether the data item is a positive or negative number, whether it falls within a user defined range or whether it is higher or lower than its previous value; colours are user defined. Conditional colours can be applied to both the data item and its background.

In addition, each item part can be **Conditional displayed** dependent on user defined logic.



## Managing Content



Adding and removing tickers is straight forward; remove does not delete the source file, but before removing a ticker it should first be saved to ensure it can be retrieved if required at a later date (use the File tab, Save or Save As).

'Add new ticker' opens a new editing dialogue box. From there a user can add a data line of their choice. Starting with 'New Item', select 'Data type', add the Parts required and 'Apply to selected'.

Where data lines have a similar structure, an existing data line can be selected, amended and 'Applied as a new item'. 'Apply to all' will only apply at part level; where a user edits a data line part (e.g. makes a formatting change), this can be applied to all parts at the same level (e.g. all Part 2's).

Data lines can be moved up and down in sequence, sorted and deleted as required. Once a virtual ticker has been created it should be saved, usually to the default folder:

Documents/OmniApps/OmniTicker.

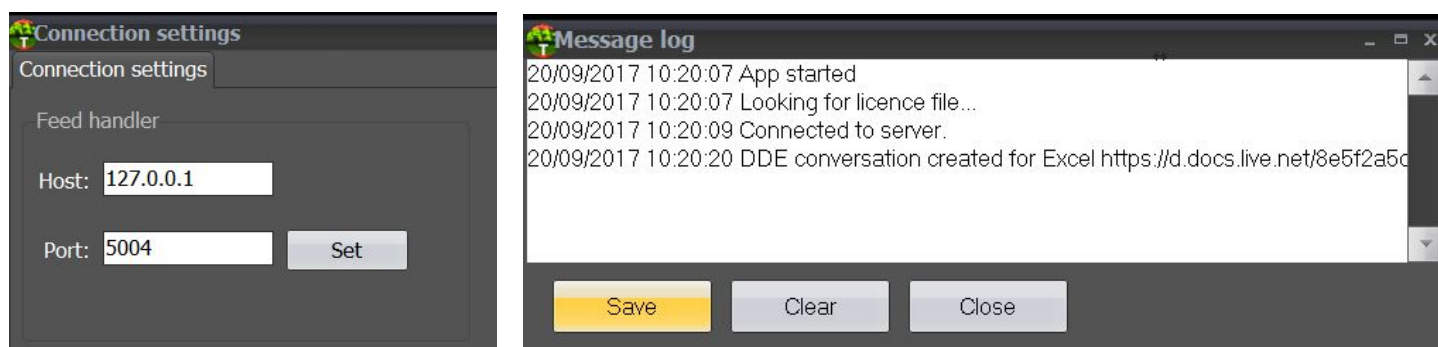
Scheduled Files, Playlist and Static Items are covered later in this document.



## OmniTicker Tools & Reports

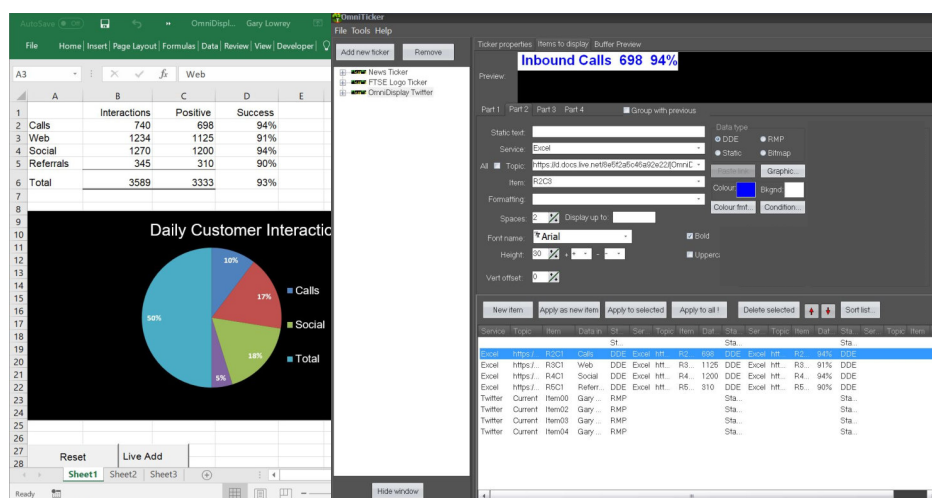
OmniTicker has a powerful RSS feed manager, **OmniRSS**. **OmniRSS User Guide** provides full details on its use and connectivity.

OmniRSS is used to extract real-time data from RSS Feeds and Yahoo Finance, whereas Excel is the primary interface to financial data feeds such as Reuters and Bloomberg. Excel is also used to provide a simple interface to a user's internal systems to source internal real-time numerical data.



### Connection Settings

From the Tools tab a user can view the connection settings to OmniRSS and the Message Log.

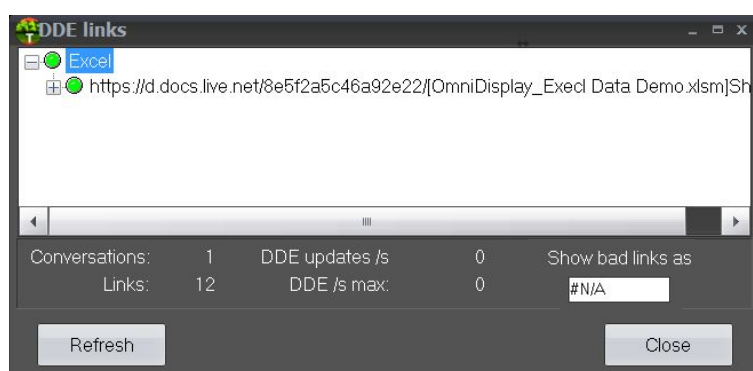


The Feed handler auto-connects to OmniRSS with a default port 5004. The message log records the applications actions and provides a user with any errors in attaching to the associated programs and services.

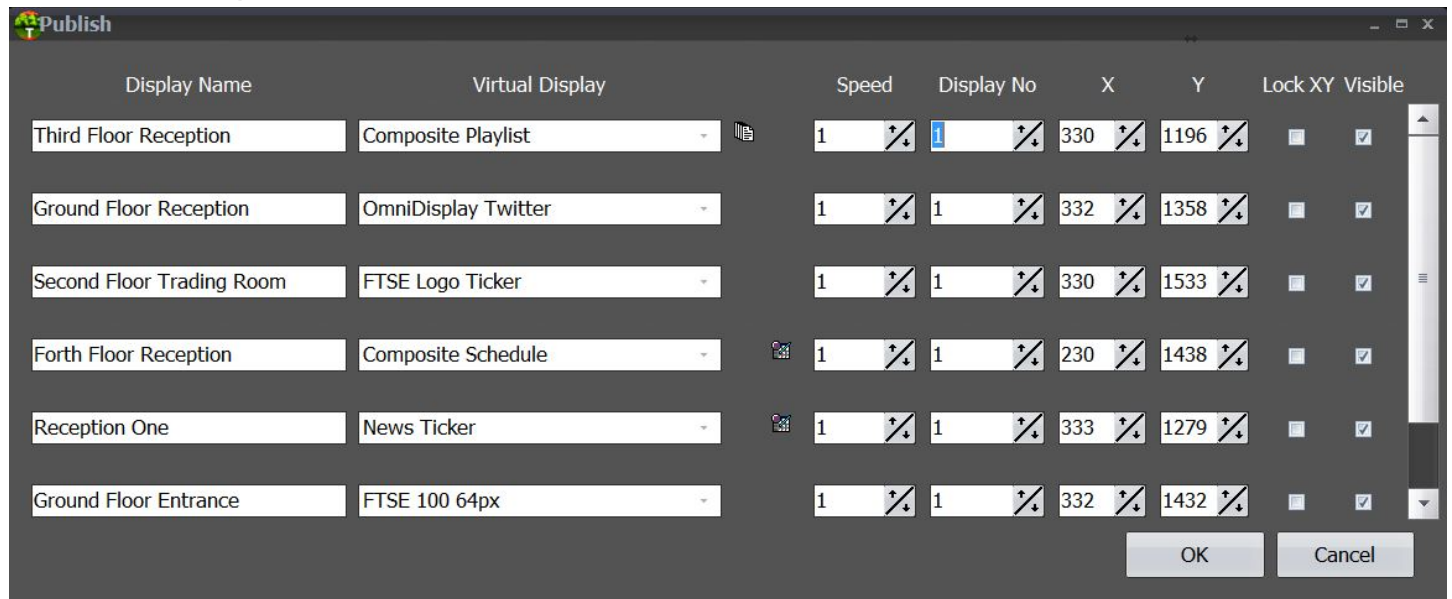
### OmniTicker and Excel

For OmniTicker to work with Excel the application must be open on the desktop and started prior to starting OmniTicker.

DDE Links show the number of active links and any that are broken. A user can define how broken/bad links are shown on the virtual ticker.



## Publishing a Ticker



From the Ticker Properties tab, the Publish function opens the above dialogue box. From here a user will see all the virtual tickers open and available.

For ease of reference, the **Display Name** is user defined, whereas the **Virtual Display** is selected from the dropdown menu, which lists displays that are open and available. These include standard tickers, playlists and schedules with playlists and schedules identified by an adjacent symbol.

**Speed:** The speed at which the ticker scrolls; default is 1 (slowest) with 5 (fastest).

**Display No:** This is the display number identified from Windows Extended Desktop. For example a second monitor would be 2 and a third and forth, 3 and 4.

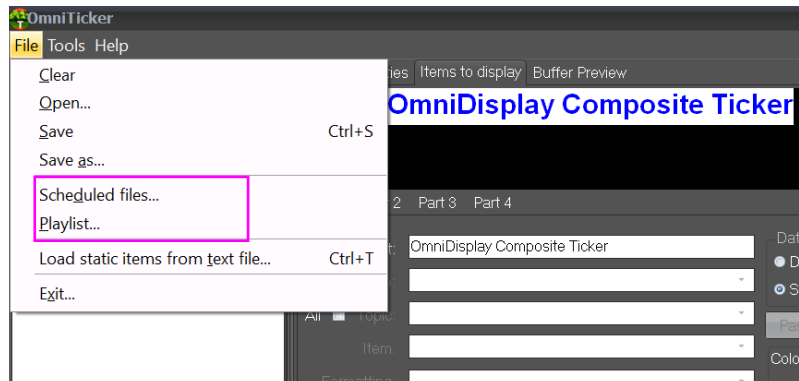
**X & Y:** For a standard video ticker these are usually be set to (0,0). Where the ticker is required to appear on a display larger than the ticker's size in pixels, the X and Y coordinates would be specified by the user and set such the ticker appears in the correct position on the the target display.

**Lock XY:** Ensures each time OmniTicker restarts the virtual ticker will appear in the correct place on the target display.

**Visible:** A user can opt to the make a particular virtual display not visible on the target display. This could be a user is editing the virtual display or has chosen to publish a different virtual ticker to that physical ticker or display.



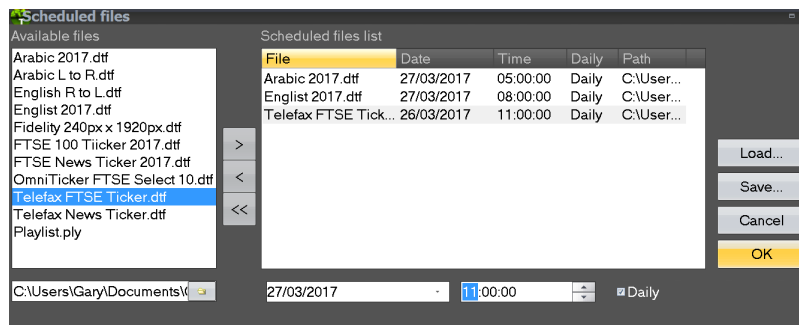
# Schedules & Playlists



Schedules and Playlists provide the capability to change the content that appears by grouping tickers together that are the same height and width in pixels.

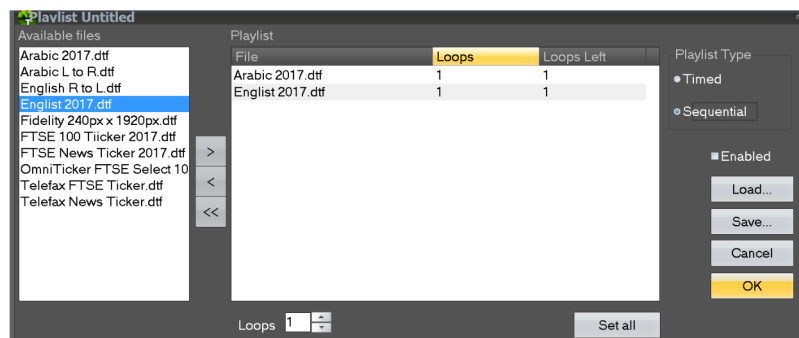
Schedules and Playlists can be composed from any of the available user files that are placed into the directory:

Documents/Omni Apps/OmniTicker



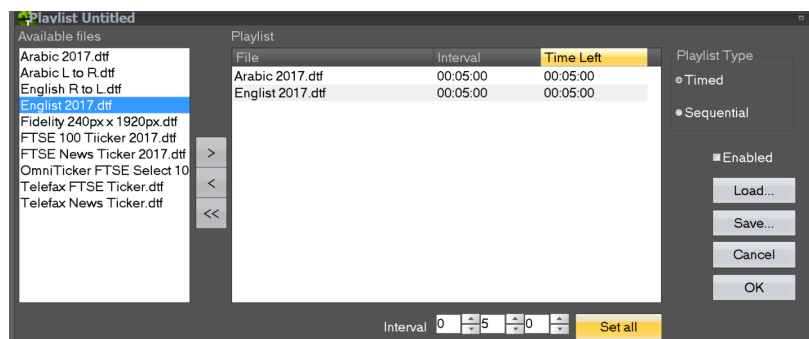
Schedules are setup by selecting the tickers, the date upon which they are to start, time and frequency.

A schedule can also include a Playlist



Playlists are sequential or timed, can be active (enabled) or non-active.

Timed playlists are intended to replay with their refreshed data (where appropriate) with each playlist set to go through a number of loops (replays) before returning to the beginning of the list.



Sequential playlists are set to play for different time intervals.

Scheduled files have a file extension 'sfl' whereas Playlists have a file extension 'oply'.